

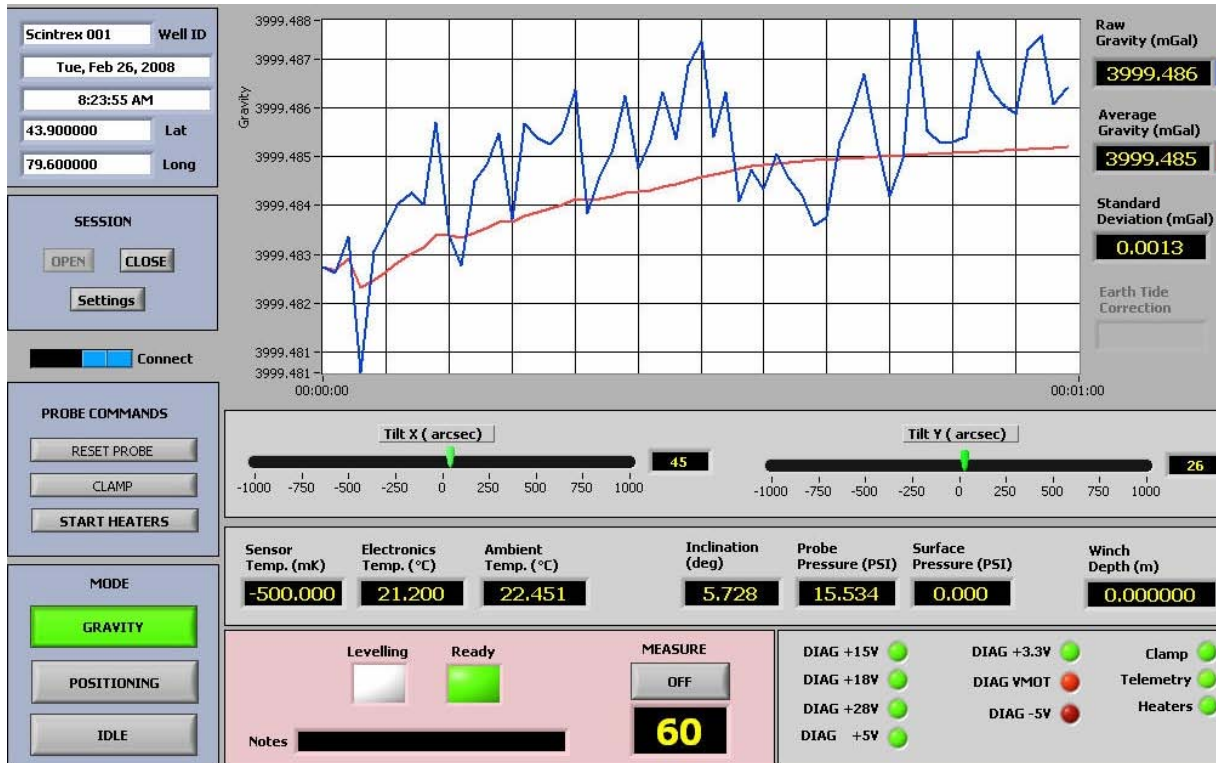


GRAVILOG



**Slim Hole Gravity Tool
for Mining and Geotechnical
Applications**

GRAVILOG OPERATING SOFTWARE



Standard Field Repeatability
 Operating Range:
 Minimum sonde diameter:
 Length:

Better than 5 μ Gal
 7000 milliGal
 48 mm
 Gravity probe & clamp: 2.3 m
 Gamma – CCL Support: 1 m
 2000 m (water filled hole)
 BQ (60 mm) and NQ drill rods (57.2 mm)
 60 degrees
 Downhole section 0°C to +70°C
 Uphole section excluding PC -40°C to +50°C

Maximum operating depth:
 Minimum hole diameter:
 Maximum hole deviation from the vertical:
 Operating temperature range:

Relative vertical position determination
 in borehole:

\pm 5 cm (depth and trajectory will be determined with a combination of pressure sensor, winch encoder and fluxgate magnetometer or CCL)

Winch with standard 4 conductor cable (min)

An ISO 9001:2000 registered company

All specifications are subject to change without notice.

Part No. 876711 Rev. 0



CANADA

Scintrex
 222 Snidercroft Road
 Concord, Ontario L4K 2K1
 Telephone: +1 905 669 2280
 Fax: +1 905 669 6403
 e-mail: scintrex@scintrexltd.com
 Website: www.scintrex.com



USA

Micro-g LaCoste
 1401 Horizon Avenue
 Lafayette, CO 80026
 Telephone: +1 303 828 3499
 Fax: +1 303 828 3288
 e-mail: info@microglacoste.com
 Website: www.microglacoste.com