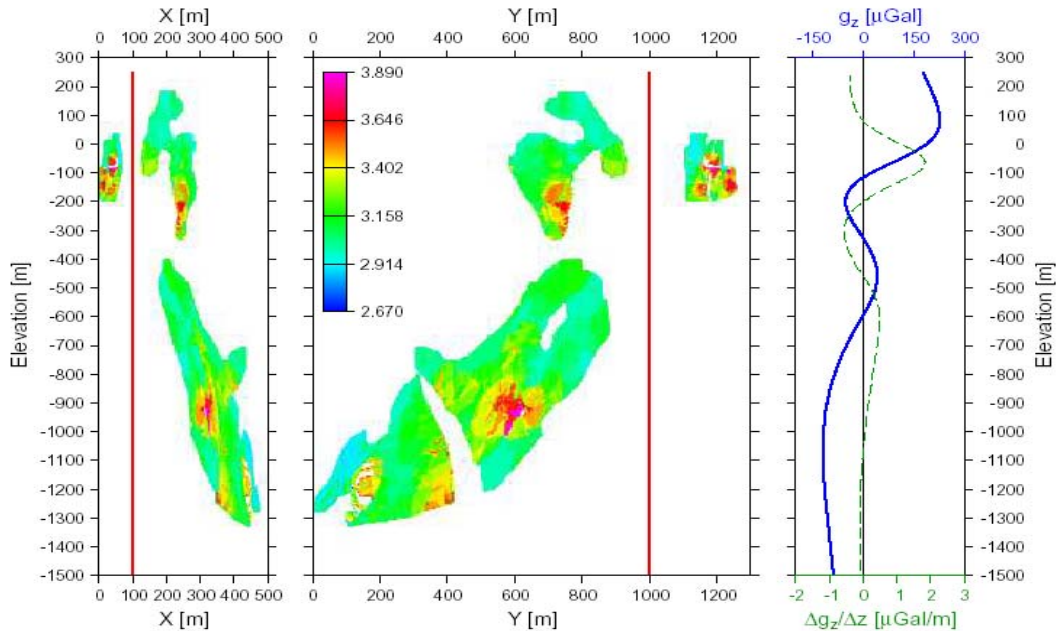




GRAVILOG

**Slim Hole Gravity Surveys
for Mining and Geotechnical
Applications**

WHY DO A BOREHOLE GRAVITY SURVEY?



Bulk Density Determinations

- Improved grade control
- Rock properties
- Relative local rock strength
- Monitoring integrity of dams and tailings ponds

Maximum depth:
Minimum hole diameter:
Sensitivity:
Deviation from Vertical:
Borehole Temperature

2000 m
NQ drill rods (57.2 mm, 2 ¼")
<5 microGal
up to 60°
up to 70°C

Remote Detection

- Massive sulphide deposits
- Other types of metallic deposits
- Non-metallic deposits
- Verification of surface and airborne gravity anomalies
- Association of mass with conductors
- Detection of cavities and voids

ISO 9001:2000 registered company. All specifications are subject to change without notice.

Specification Sheet Part Number 876712 Rev. 0



CANADA

Scintrex
222 Snidercroft Road
Concord, Ontario L4K 2K1
Telephone: +1 905 669 2280
Fax: +1 905 669 6403
e-mail: scintrex@scintrexltd.com
Website: www.scintrex.com



USA

Micro-g LaCoste
1401 Horizon Avenue
Lafayette, CO 80026
Telephone: +1 303 828 3499
Fax: +1 303 828 3288
e-mail: info@microglacoste.com
Website: www.microglacoste.com